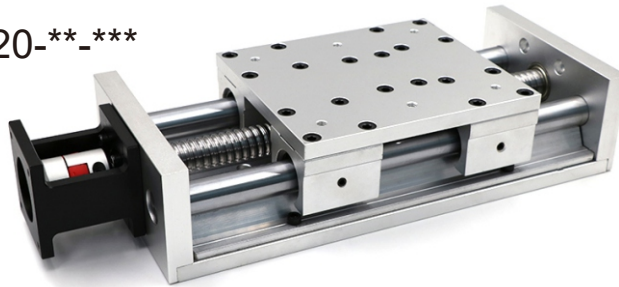
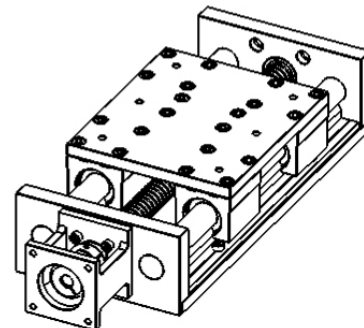
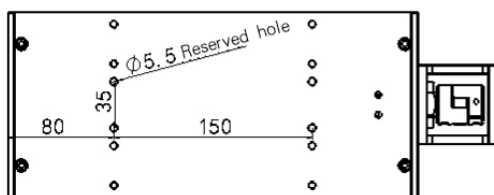
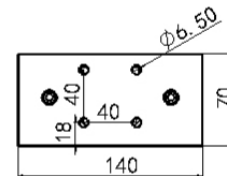
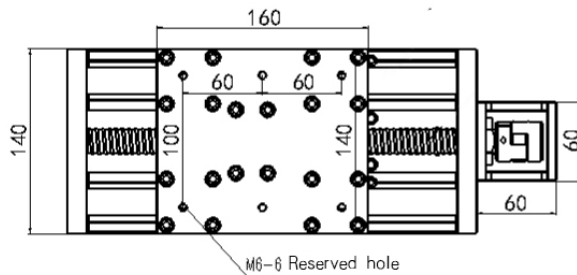
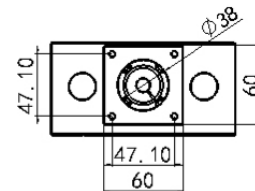
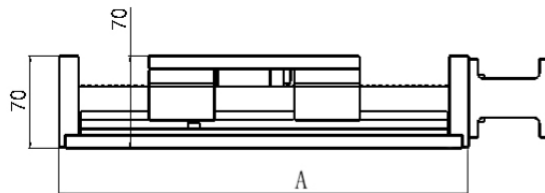


Linear Stage Z-20-20-**-***



Linear Stage Z-20-20-**-***

Adaptation Motor		57/86stepping motor, 100W/200W/400W Servo		
SBR Guideway		SBR20*2 SBR20UU*4		
Ball Screw		Φ20-C7		
Repeatable Positioning Accuracy (mm)		± 0.03		
Lead Screw (mm)		5	10	20
Max Speed (mm/s)		250	500	1000
Maximum Handling Weight (Kg)	Horizontal	80	40	20
	Vertical	50	25	20
Stroke Range (mm)		100-1800		



Effective stroke (mm)	100	200	300	400	500	600	700	800	900
A (mm)	310	410	510	610	710	810	910	1010	1110
Weight (kg)	5.5	7	8.5	10	11.5	13	14.5	16	17.5

Effective stroke (mm)	1000	1100	1200	1300	1400	1500	1600	1700	1800
A (mm)	1210	1310	1410	1510	1610	1710	1810	1910	2010
Weight (kg)	19	20.5	22	23.5	25	26.5	28	29.5	31