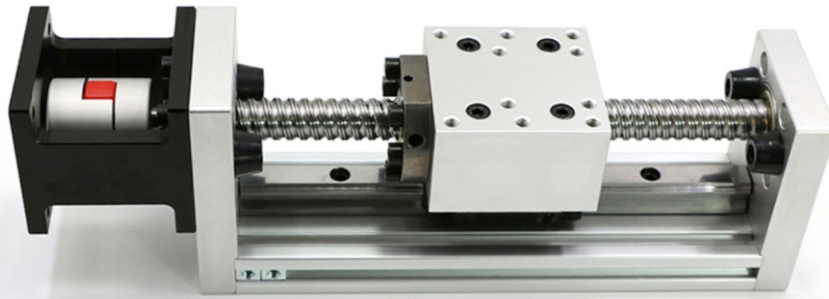
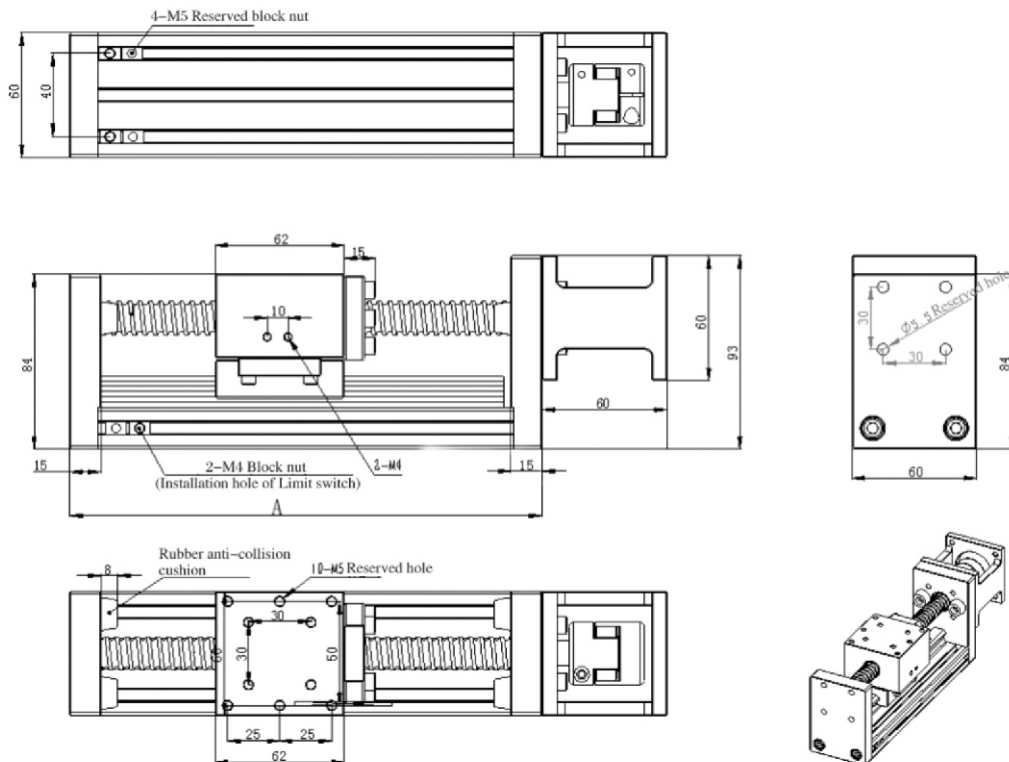


# GY-HGWS60K



GY-HGWS60K Primary Configuration/Parameters

Adaptation Motor	57/86 stepping motor, 100W/200W/400W Servo				
Linear Guideway	HGR15*1 HGW15*1				
Ball Screw	Φ16-C7				
Repeatable Positioning Accuracy ( mm )	± 0.03				
Lead Screw ( mm )	5	10	16	20	
Max Speed ( mm/s )	250	500	800	1000	
Maximum Handling Weight ( Kg )	Horizontal	50	45	40	35
	Vertical	30	25	20	15
Stroke Range ( mm )	100-1200				



Effective stroke ( mm )	100	200	300	400	500	600	700	800	900	1000	1100	1200
A ( mm )	230	330	430	530	630	730	830	930	1030	1130	1230	1330
Weight ( Kg )	2.5	3.3	4.1	4.9	5.7	6.5	7.3	8.1	8.9	9.7	10.5	11.3