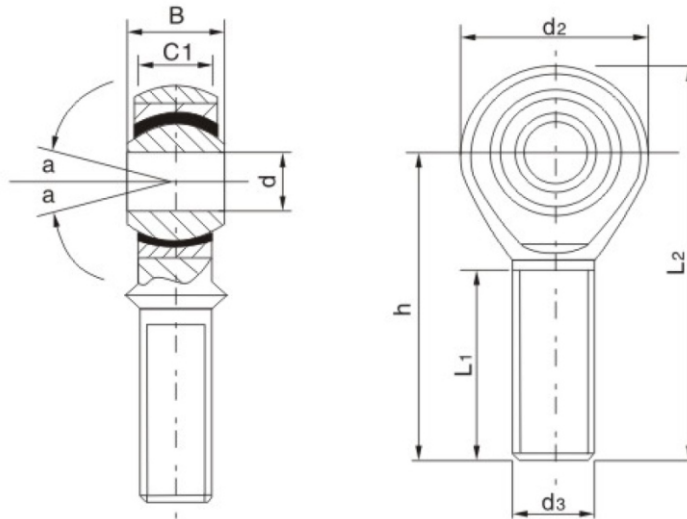


Self-lubricating Rod End Bearings Male Thread Steel on Ptee-Metallic Fabric Maintenance Free Series POSA



Model No.	Dimensions (mm)								a°	Max Stat Load Capacity	Weight (kg)	Old Model No.
	d ₃	d	d ₂	B	C ₁	h	L ₁	L ₂				
POSA5	M5x0.8	5	18	8	6	33	19	42	13	-	-	SA5T/K
POSA6	M6x1	6	20	9	6.75	36	22	46	13	4.40	0.021	SA6T/K
POSA8	M8x1.25	8	24	12	9	42	25	54	13	8.00	0.034	SA8T/K
POSA10	M10x1.5	10	28	14	10.5	48	29	62	13	12.90	0.058	SA10T/K
POSA12	M12x1.75	12	32	16	12	54	33	70	13	17.00	0.092	SA12T/K
POSA14	M14x2	14	36	19	13.5	60	36	77	13	24.00	0.153	SA14T/K
POSA16	M16x2	16	40	21	15	66	40	86	13	28.50	0.205	SA16T/K
POSA18	M18x1.5	18	46	23	16.5	72	44	95	13	25.00	0.280	SA18T/K
POSA20	M20x1.5	20	50	25	18	78	47	103	13	40.00	0.370	SA20T/K
POSA22	M22x1.5	22	54	28	20	84	51	111	13	52.00	0.475	SA22T/K
POSA25	M25x2	25	60	31	22	94	57	124	13	60.00	0.650	SA25T/K
POSA28	M27x2	28	66	35	26	103	62	136	13	-	-	SA28T/K
POSA30	M30x2	30	70	37	25	110	66	145	13	81.00	1.070	SA30T/K

1. For Left-hand thread suffix "L" is added to bearings numbers and thread POSAL8KM8x1.25L-6H

2. A=To line SF1 material on the surface of spherical plain