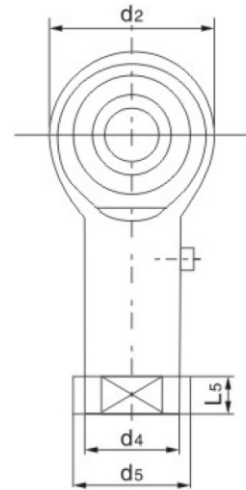
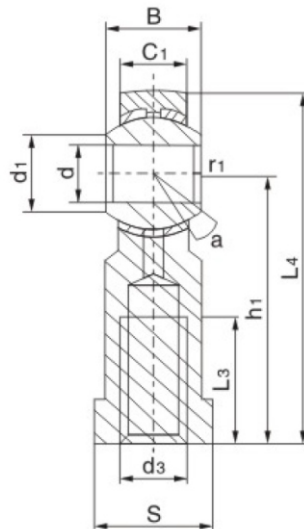


Rod Ends with female thread series PHS



Model No.	Dimensions (mm)											Load Ratings		a°	Weight (kg)
	C1	d	B	d2 max	d3	H1	L3 min	L4 max	L5 max	d5 max	S	Dynamic	Static		
PHS5	6	5	8	16	M5X0.8	27	14	35	4	11	9	3.3	4.1	13	0.016
PHS6	6.75	6	9	18	M6X1	30	14	39	5	13	11	4.3	5.3	13	0.026
PHS8	9	8	12	22	M8X1.25	36	17	47	5	16	14	6.8	8.5	14	0.044
PHS10	10.5	10	14	26	M10X1.5	43	21	56	6.5	19	17	10	11	14	0.072
PHS12	12	12	16	30	M12X1.75	50	24	65	6.5	22	19	13	14	13	0.108
PHS14	13.5	14	19	34	M14X2	57	27	74	8	25	22	17	20	16	0.161
PHS16	15	16	21	38	M16X2	64	33	83	8	27	22	21	25	15	0.225
PHS18	16.5	18	23	42	M18X1.5	71	36	92	10	31	27	26	30	15	0.295
PHS20	18	20	25	46	M20X1.5	77	40	100	10	34	30	31	35	15	0.382
PHS22	20	22	28	50	M22X1.5	84	43	109	12	37	32	38	43	15	0.488
PHS25	22	25	31	60	M24X2	94	48	124	12	42	36	47	65	15	0.749
PHS28	25	28	35	66	M27X2	103	53	136	12	46	41	59	77	15	0.949
PHS30	25	30	37	70	M30X2	110	56	145	15	50	41	63	86	17	1.13

1. For Left-hand thread suffix "L" is added to bearings number and thread sign, e.g. PHS8 M8L-6H
2. The surface of spherical plain with a bronze line
3. To plate zine on the surface of rod body, the housing with a lubrication hole ora grease nipple