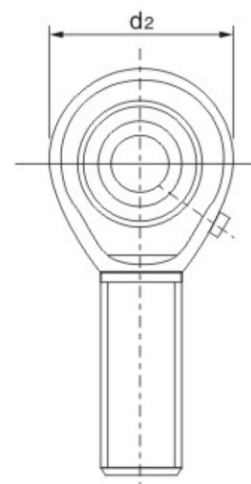
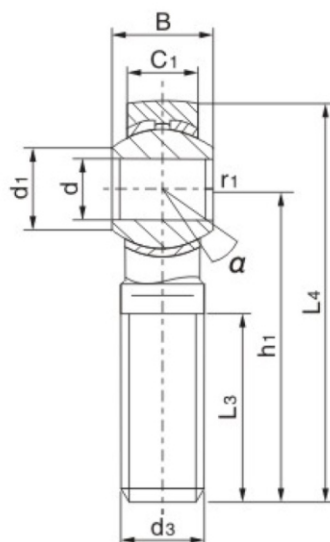


## Rod Ends with male thread series POS



Model No.	Dimensions ( mm )										Load Ratings		a°	Weight (kg)
	d	B	r1	C1	d1	d2	d3	h1	L3	L4	Dynamic	Static		
POS5	5	8	0.3	6	7.7	16	M5X0.8	33	20	41	3.3	3.9	13	0.016
POS6	6	9	0.3	6.75	9	18	M6X1	36	22	45	4.3	5.3	13	0.026
POS8	8	12	0.3	9	10.4	22	M8X1.25	42	25	53	6.8	8.5	14	0.044
POS10	10	14	0.6	10.5	12.9	26	M10X1.5	48	29	61	10	11	14	0.072
POS12	12	16	0.6	12	15.4	30	M12X1.75	54	33	69	13	14	13	0.108
POS14	14	19	0.6	13.5	16.9	34	M14X2	60	36	77	17	20	16	0.161
POS16	16	21	0.6	15	19.4	38	M16X2	66	40	85	21	25	15	0.225
POS18	18	23	0.6	16.5	21.9	42	M18X1.5	72	44	93	26	30	15	0.295
POS20	20	25	0.6	18	24.4	46	M20X1.5	78	47	101	31	35	15	0.382
POS22	22	28	0.6	20	25.8	50	M22X1.5	84	51	109	38	43	15	0.488
POS25	25	31	0.6	22	29.6	60	M24X2	94	57	124	47	65	15	0.749
POS28	28	35	0.6	25	32.3	66	M27X2	103	62	136	59	77	15	0.949
POS30	30	37	0.6	25	34.8	70	M30X2	110	66	145	63	86	17	1.13

1. For Left-hand thread suffix "L" is added to bearings number and thread sign, e.g. POS8M8L-6H

2. The surface of spherical plain with a bronze line

3. To plate zinc on the surface of rod body, the housing with a lubrication hole or a grease nipple