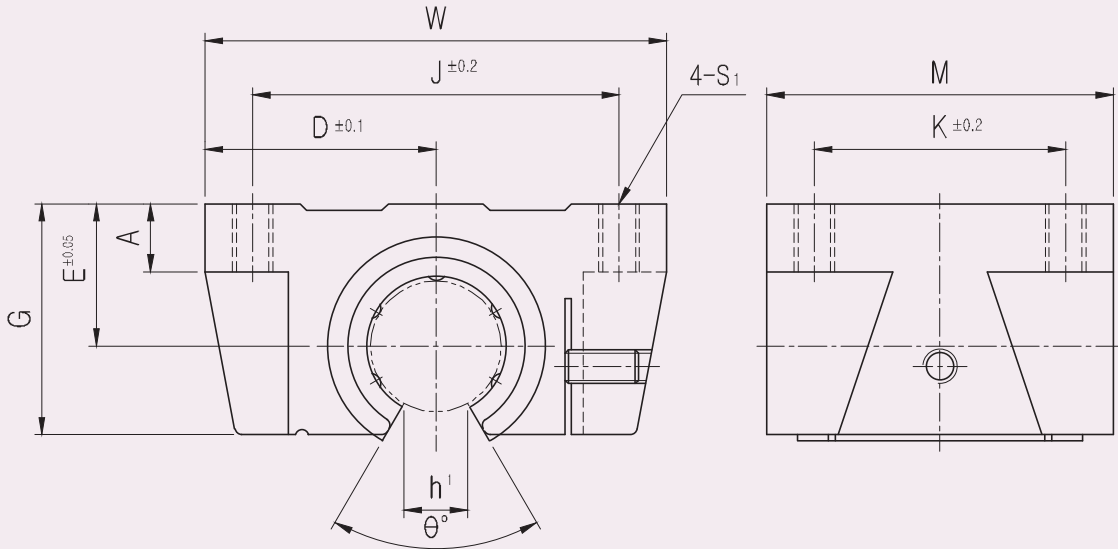


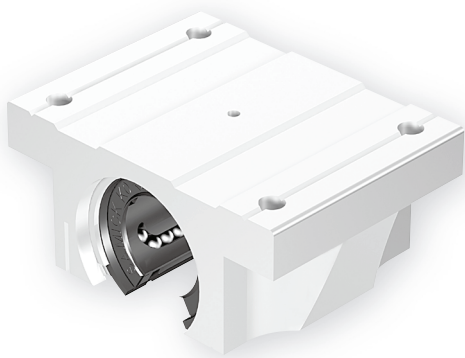
# TBR ALUMINUM CASE UNIT OPEN

● Drawing



● Part Number Notation

**TBR 20 UU - N S**



- Aluminum Case Unit(Open type)
- Nominal Shaft Diameter
- Seal

Blank	No Seal
UU	Both Side Seal
U	One Side Seal

- Outer-sleeves (by corrosion resistance)

Blank	Standard(SUJ2)
N	Electroless nickel plating
R	Raydent treatment

- Ball type (material)

Blank	High carbon bearing steel ball(Standard)
S	Stainless steel ball

## TBR ALUMINUM CASE UNIT OPEN

PART NUMBER	L/B	D	W	G	$\theta$	A	M	$S_1$	$h_1$	E	J	K	BASIC LOAD RATING(N) <sup>*4</sup>		WEIGHT (gf) <sup>*2</sup>
													DYNAMIC (C) <sup>*1</sup>	STATIC (Co)	
TBR16UU	LM16UUOP	31	62	26	80°	8	42	M5	11	18	50	30	392	490	180
TBR20UU	LM20UUOP	34	68	31	60°	10	51	M6	11	21	54	37	784	1176	300
TBR25UU	LM25UUOP	41	82	41	50°	12	65	M8	12	28	65	50	1568	2352	600
TBR30UU	LM30UUOP	45.5	91	48	50°	12	75	M8	15	34	75	60	1764	2940	900

- ★1 Dynamic load rating is based on the nominal life of 50km  
In case of 100km, C on the table need to be divided by 1.26  
Ex) 50km basic dynamic load rating(C) of TBR16UU = 392N  
100km basic dynamic load rating(C<sub>100</sub>) of TBR16UU = 392/1.26 = 311.11N
- ★2 Based on the weight of resin retainer
- ★3 Main unit : mm
- ★4 1N  $\cong$  0.102kgf